



SparqLinq: real-time performance monitoring.

Backed by industry standard Zigbee wireless communication, SparqLinq is features a powerful and fast user interface that's easy to use from anywhere, with nearly any device.

Using powerful and easy-to-understand visualization tools, SparqLinq ensures you have instant access to real-time information and historical data.

Quick Installation

- Automatically detects and provisions connected inverters before AC is connected
- Installation layout automatically syncs to your cloud account



Easy to Use

- Advanced cloud-based monitoring software accessed from anywhere, with no app required

Data When You Need It

- Displays real-time metrics and stores history for the life of the system
- Panel-by-panel information for monitoring and troubleshooting

Smart Systems

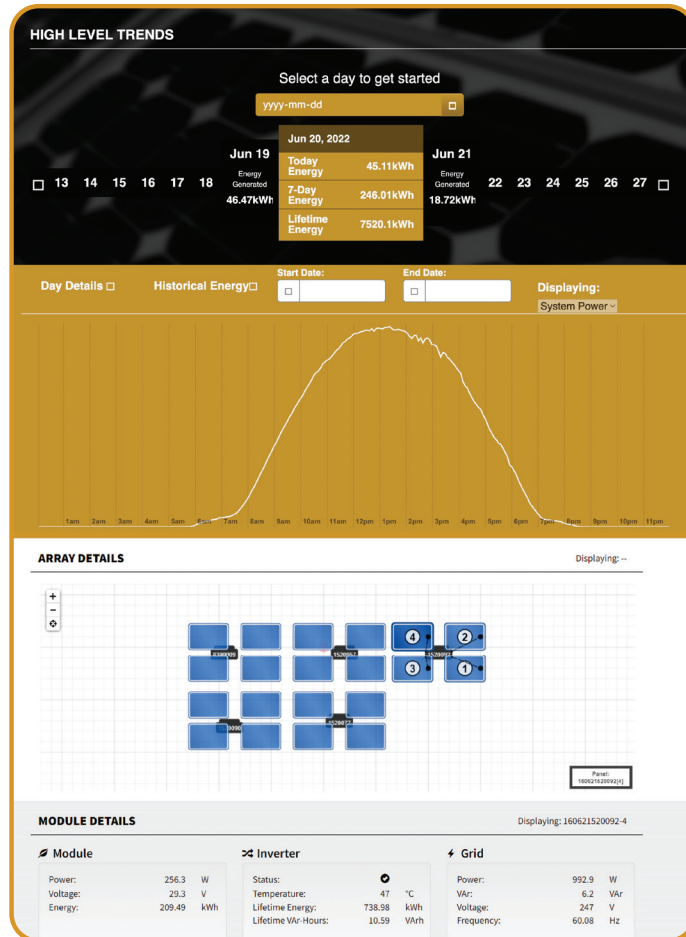
- Backed by industry standard Zigbee wireless communication for fast and reliable communications
- Future-proof to support new and improved features through remote updates

Model:

SL200-2001

Sparq's all new SparqLinq is faster, more powerful, and much more feature rich than ever before. An all new user interface backed by industry standard Zigbee wireless communication allows for instant access to real-time information as well as historical performance records from their PV installation.

Paired with the advanced Q1200 microinverter, solar photovoltaic systems have never been so advanced.



Using powerful visualization tools, Sparq's user interface simplifies the vast amount of information collected from a PV system and displays it in a quick and easy to understand SparqLinq cloud-based energy management portal.

"SparqVu", users can expect to have complete access to their data from anywhere with nearly any device.

Model:
SL200-2001

Mechanical Specifications

Input Specifications	
AC Voltage Range	100-240V Single Phase
Frequency Range	50-60Hz
Maximum Current	2.5A
DC Input Voltage	5V
DC Input Current	0.6A typical
Mechanical and Environmental Data	
Cooling	Natural Convection
Ambient Temperature Range	0-50° C (0-122°F)
Enclosure Rating	Indoor only
Dimensions	92mm x 73mm x 37mm (3.6"x2.9"x1.5")
Weight	200g (7oz.)
Mounting	Wall mount or self-standing
Interfaces	
Inverter Communication	Wireless via modified Zigbee-HA
Local Area Network (LAN)	Ethernet 10/100Mbps, Wi-Fi
Capacity	
Inverter Quantity Supported	Recommended max. 30 inverters (100 Future, please contact Sparq with your specific application)
On-Device Data Storage	Up to 25 years
Miscellaneous	
Standard Warranty	2 years
Regulatory Compliance	FCC Part 15 Class B, CSA22.2 60950-1, UL 60950-1.



Model:
SL200-2001

Dimensions



All dimensions in mm

sparqsys.com

info@sparqsys.com

945 Princess St.
Kingston, ON K7L 0E9
Canada

Model:
SL200-2001